

Professional Joinery Tutorials

Flat Pack Assembly



The choice of flat-packs is almost endless.

Whether you need a fitted kitchen or some shelves, you will find a flat-pack to suit your requirements.

Convenient

Flat-packs have become so popular because they are readily available and easy to transport. Most are packed so they can fit into a normal family car.

Versatile

Flat-packs are a convenient way of creating attractive storage space, and many ranges are so versatile that with a little imagination you can create almost any design to suit the style of your home. They are made in a wide range of wood, coloured or glass finishes.

Flexible

Flat-packs allow you to choose your own accessories. When you make your purchase, check what has been included in the pack. You may need to buy handles, drawer fronts or legs separately; this is a good opportunity to add your own design touches. You can even buy conversion kits to transform a simple cabinet into a filing cabinet, or a set of drawers. You can mix and match finishes, or replace the doors or drawer fronts to match a new colour scheme.

There is no need to feel limited by the size of unit available. Measure the space you wish to fill and then work out if a combination of units will fit the area. The units are designed to fit together horizontally, vertically, or both. Once they are secured to the wall, they will be perfectly stable and look just like fitted units.

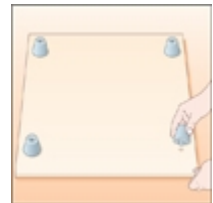
Logical

Flat-packs follow the same basic principles. The steps are logical and each part will be numbered clearly on the accompanying instructions. The most important thing is to read the instructions carefully first, check nothing is missing before you begin, and allow plenty of uninterrupted time for assembly.

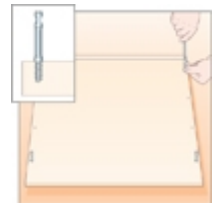
Assembling a small cabinet

This compact cabinet is a typical building block in a flexible, modular storage system. You can fit drawers, or a shelf and door to make it into a cupboard. Buy several to make a unit that is purpose-built for your storage needs. Always read the manufacturer's assembly instructions too, since individual products may differ.

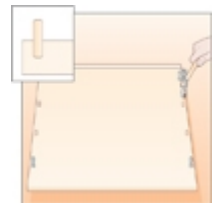
1 Lay panels out on the floor so that you can easily see each part. Keep screws and fixings inside their packaging until you need to use them. Push the legs into the pre-drilled holes underneath the base panel.



2 Turn the base panel over so that it is standing on the legs. Using a screwdriver, screw four cam studs into the pre-drilled holes closest to each corner.



3 Apply a little of the PVA wood adhesive supplied to one end of four wooden dowels and insert them into the pre-drilled holes either side of the base panel. Tap them into place with a small hammer.

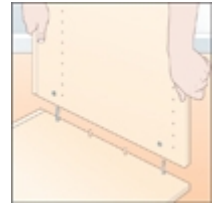


4 Insert a locking cam into each of the larger holes at the bottom of the side panels. The arrows embossed on the cams must point towards the end of the panel.

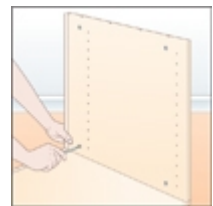


5 Use a trimming knife to remove any excess edging at both ends of the grooves running along the length of the side panels. This is where the back panel will be fitted.

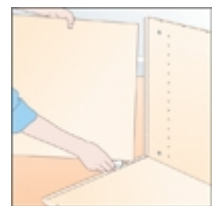
6 Apply a little PVA wood adhesive to the protruding end of each dowel. Fit the first side panel to the base. It should slide neatly onto the already glued dowels.



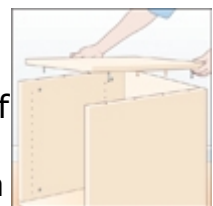
7 Secure the first side panel by tightening the two locking cams. Use a screwdriver, and turn them clockwise.



8 Run a bead of glue along the grooves in the side and base panel you have already assembled. Slide the back panel into place.



9 Slide the second side panel into position. Tighten the two locking cams. Insert four locking cams into the holes on the top of the side panels, with their arrows pointing towards the end of the panel. Glue four wooden dowels and fit them into the top panel. Insert four cam studs into the pre-drilled holes and run a bead of glue into the groove. Fit the top panel. Tighten the locking cams and fit cam covers to all of the exposed locking cams.



Fitting a shelf and door hinges

This cabinet is supplied with a shelf, but you can fit shelves into any flatpack cabinet. Door hinges are usually supplied with all the necessary fixings, and doors and cabinets have cut-outs and guide holes for easy fitting.

1 Use a screwdriver to fit two shelf support screws into each side panel at the same height. Avoid using the predrilled holes that you will need to fit door hinges to the cabinet.



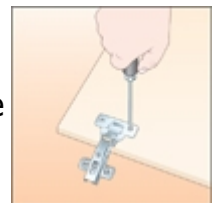
2 Place the four shelf support inserts into the pre-formed holes in the shelf and tap into place with a small hammer. Slide the shelf in and press down to clip into place resting on the exposed screw heads on the side panels.



3 To fit door hinges, use a bradawl to make guide holes in the pre-marked positions on the cabinet door. Insert the circular part of the hinge in the large hole in the door.



4 Fix the hinges to the door using the screws provided. Make sure they are fitted squarely. Once all the hinges are in position on the door, fix them to the guide holes on the side panel of the cabinet. Do not over tighten the screws.



[For more tutorials and information](#)